

Re(AI)magine Enterprise Transformation

Experience AI, Engineered Differently.

From Intelligence to Impact Through **Enterprise-Ready AI**

Enterprises are rapidly adopting AI, but the real difference between *using AI* and *scaling AI* lies in *how it is engineered*.

Persistent.AI brings together three decades of product engineering excellence, data mastery and deep domain expertise to deliver secure, outcome-driven and responsibly governed AI transformation built for speed, scalability and measurable business impact.

Unlike traditional systems integrators focused on project execution, **Persistent applies a platform-led, engineering-first approach** that unifies generative, deterministic and agentic intelligence. This helps enterprises move from pilots to production with greater velocity, certainty and sustained business value.

Every engagement is grounded in our **Responsible AI Framework**, ensuring governance, fairness, transparency and accountability across all models, workflows and decisions.

Our IP and Platforms for Real Impact



Google Cloud Platform

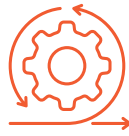


What Sets Persistent.AI Apart



Engineering-Led Innovation:

Deep software-engineering expertise ensures AI is designed for scalability, reliability and seamless integration.



Velocity by Design:

Accelerate innovation from concept to production with speed across platforms, data and workflows, delivering measurable outcomes faster and at scale.



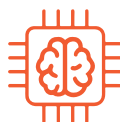
Platform-Led Engineering Ecosystem:

SASVA™, iAURA and GenAI Hub form a unified ecosystem that merges platform innovation with engineering excellence, enabling AI transformation that's faster, smarter and built to scale.



Outcome Obsessed:

Proven accelerators delivering 30-70% productivity gains and 40% faster transformation across industries.



Service-as-Software Model:

AI-augmented services behave like self-learning software, continuously optimized by humans in the loop and delivered end to end with predictable business performance.



Responsible by Design:

Governance, transparency and compliance built into every layer through Persistent's Responsible AI principles.

Re(AI)magine Enterprise Transformation

SASVA™ - Deterministic AI Platform for Enterprise Software Development and Transformation

SASVA is the deterministic AI platform spanning the full SDLC and beyond, elevating every role, enforcing privacy by design and producing enterprise-grade, predictable outcomes at affordable cost.

What SASVA Does

- ♂ **Understands your complete software estate and delivers an actionable plan aligned to your business goals:** Millions of lines of code across legacy and modern tech stack, architecture dependencies, business logic, tickets, documentation, security, tech debt and more.
- ♂ **Executes across the full lifecycle** from assessment, requirements and planning through development, testing, deployment, operations and beyond
 - ♂ **Planning and Requirements:** Impact analysis, effort estimation, dependency mapping, backlog prioritization.
 - ♂ **Development:** Code generation, intelligent refactoring, technical debt analysis, security and compliance, architecture generation and recommendations.
 - ♂ **Testing and Quality:** Automated test generation, defect prediction, regression identification, coverage analysis.
 - ♂ **CI/CD and Deployment:** Risk assessment, infrastructure automation, deployment orchestration, rollback management.
 - ♂ **Operations and Support:** Incident analysis and triage, root cause identification, performance optimization, defect and knowledge management.
 - ♂ **Modernization and Transformation:** Legacy system analysis, migration planning, technical debt prioritization, transformation execution.
 - ♂ **Enterprise Workflows:** Canvas for document analysis, reporting, decision support, cross-functional collaboration and more.
- ♂ **Universal Canvas for Business Users and Builders:** Web interface for business users, IDE extensions for builders, API for DevOps, conversational Interfaces for Support/Ops, works where your teams already work.



What Makes SASVA Different

♂ Deterministic and Secure AI:

Delivers enterprise-grade results, predictability and security through breakthrough techniques backed by 100+ patents.

♂ Operates on your Infrastructure:

100% on-premises deployment, air-gapped environments supported, runs on Mac Studios to data centers. Your data never leaves your infrastructure.

♂ Affordable and Accessible:

Small, affordable models delivering enterprise-scale results from commodity hardware, latest and greatest configurations available at 40-50% lower cost.

♂ Profile-Based Access Control:

Role-specific workspaces (Developer, Architect, Product Manager, Support, Security, Executive) with pre-configured models, tools, permissions, and workflows.

♂ Modular, Integrated, Responsible:

With a plug-in architecture and extensive integrations, SASVA embeds into your stack and enforces responsible AI by design scaling from individual teams to global portfolios.

♂ Future-Proof Foundation with Complete Extensibility:

A secure, extensible canvas that evolves with your tools and models. Full MCP support. Bring your own models, tools, APIs. Open platform that grows with AI innovation.

Proof in Action

Accelerated Transformation and Value Creation



80% - 90%
faster onboarding



~60%
improvement in
time-to-market



~40%-50%
reduction in cost



100+

patents powering enterprise efficiency
and cost optimization

Re(AI)magine Engineering Transformation with SASVA™



Transform Your Data into Value for Business Growth

Building AI-Ready Data Architectures for Real-Time Enterprise Intelligence

At Persistent, our **Enterprise Data & AI-Readiness** capability — powered by **iAURA** — helps organizations build a modern, governed and scalable data backbone for AI-driven transformation.

An **Agentic AI-based enterprise data readiness platform**, **iAURA** embeds intelligence across the entire data lifecycle — assessments, rationalization, modelling, modernization, migration, governance and observability — turning fragmented data into trusted, contextual metadata-driven ecosystems that power analytics, automation and real-time decision-making.

By combining **AI for Data and Data for AI**, **iAURA** creates **ecosystems** where every dataset is clean, descriptive, compliant and contextually designed, driving **Responsible AI** outcomes and business agility. It helps enterprises treat data as a repeatable, investible asset with clear economics and measurable impact.

Delivering Measurable Business Outcomes Through Data Intelligence

Accelerate Decisions:

70% faster decision-making through unified, governed data foundations

Reduce Risk:

60% reduction in audit exposure via automated lineage and compliance

Boost Productivity:

20% - 30% improvement by automating repetitive data operations

Optimize Costs:

15% - 25% infrastructure savings from AI-driven cost optimization

Proof in Action

~70%

faster time-to-insight for a leading financial services company through NQL

~85%

reduction in manual work for a global insurance leader, cutting compliance cycles from 12 days to just two

Key Accelerators



Insights



Governance



Data Products



Migrate



Observability



DataOps

“Your data. Trusted, connected, AI-ready.”

Re(AI)magine Data Readiness with iAURA



Enterprise Transformation Powered by **Agentic AI**

Business Hyper-Productivity for Faster, Smarter, Sustainable Growth

Agentic AI is redefining business processes by driving **efficiency, innovation and adaptability**. Persistent's AI solutions streamline processes, enhance decision-making and open new opportunities for growth.

By embedding autonomous AI agents into functional and industry-specific workflows, we help **enterprises scale business hyper-productivity** as these agents **orchestrate, optimize and automate complex processes** across ERP, CRM and HRMS and other core systems leveraging MCP and A2A protocols.

Agentic AI in Action: Key Use Cases

Loan Processing | KYC | Credit Risk Assessment | Invoice Processing | Contract Management | Drug Diagnosis | Clinical Trials | Network Monitoring | Threat Detection & Vulnerability Management | Workflow Automation | Customer Support | Personalized Marketing Campaigns

Productivity, Efficiency and Growth Redefined:

Transform Faster:

60% acceleration in process transformation with secure, compliant agent ecosystems

Boost Efficiency:

80% faster processing

90% accuracy gains

50% cost reduction

Resolve Autonomously:

70% of issues auto-resolved via Agentic Managed Services

Strengthen Security:

50% fewer alerts and reduced downtime with proactive multi-agent defense

Scale Innovation:

Leverage Persistent's blueprints and best practices to accelerate adoption

Proof in Action

40%

faster support-ticket resolution for a cloud-security leader via Agentic Managed Services

50%

process-efficiency gain for a healthcare provider through multi-agent automation in claims processing

Key Capabilities

AI Maturity
Assessment

Ecosystem Build
and Orchestration

Intelligent Document
Processing

Cybersecurity
Automation

Process
Transformation

Agentic Managed
Services

Regulatory
Management

AI Center of
Excellence Setup

“Agentic intelligence that orchestrates, learns and drives business hyper-productivity.”

Re(AI)magine with Agentic AI

Agentic Transformation with **GenAI Hub**

The Foundational Platform to Build, Deploy and Scale Agentic AI Experiences

As enterprises move from automation to intelligent orchestration, Persistent **GenAI Hub** provides the foundation to build, deploy and scale AI agents responsibly at enterprise scale.

Powered by **Agent Studio**, the Hub enables developers and business users to design, train and operationalize intelligent agents across functions. It connects enterprise data, applications and workflows with built-in governance, flexibility and control, supporting any model, cloud or data environment for trusted AI-powered outcomes delivered with speed, security and measurable impact.

Key Capabilities

- 🌀 **Agent Studio:** Low-code/no-code workspace to design, train and orchestrate AI agents for specific business processes, empowering both developers and domain experts to accelerate adoption and innovation
- 🌀 **Agent Marketplace:** Catalog of reusable pre-validated agents deployable across enterprise functions to maximize efficiency and reduce time-to-value
- 🌀 **Playground:** No-code experimentation environment for domain experts to test and refine models from Azure OpenAI, AWS Bedrock, Google Gemini and open-source LLMs, enabling faster innovation through safe experimentation
- 🌀 **RAG Evaluation Framework:** AI-to-validate-AI testing that ensures trust, accuracy and bias control across deployed solutions
- 🌀 **Custom Model Pipelines:** Low-code fine-tuning with PEFT and LoRA on cloud or on-prem clusters, allowing tailored model optimization while maintaining security and compliance
- 🌀 **FinOps Dashboard:** Unified visibility into cost, usage and policy-based control to improve efficiency and manage AI spend intelligently
- 🌀 **Observability and Governance:** Continuous monitoring for model performance, compliance and Responsible AI assurance, ensuring sustainable trust at scale

Driving Real-World Impact

Persistent GenAI Hub powers next-generation Agentic AI solutions such as:

DocIntel

95% accuracy for document automation.

ProcessIntel

70% faster execution for workflow optimization.

Security CoPilot

40% faster response for intelligent threat detection.

Client Assist

for smarter customer engagement and sales enablement.

Pi-OmniKG

for scientific and domain-specific knowledge discovery.

“ From ideas to intelligent experiences.
accelerate enterprise AI with GenAI Hub.”

Re(AI)magine Acceleration with GenAI Hub

Re(AI)magine Enterprise Transformation

Experience AI, Engineered Differently.



Connect with us to scale your AI vision responsibly.

About Persistent System:

Persistent Systems (BSE: 533179 and NSE: PERSISTENT) is a global services and solutions company delivering AI-led, platform-driven Digital Engineering and Enterprise Modernization to businesses across industries. With over 26,000 employees located in 18 countries, the Company is committed to innovation and client success. Persistent offers a comprehensive suite of services, including software engineering, product development, data and analytics, CX transformation, cloud computing and intelligent automation. The Company is part of the MSCI India Index and is included in key indices of the National Stock Exchange of India, including the Nifty Midcap 50, Nifty IT and Nifty MidCap Liquid 15, as well as several on the BSE such as the S&P BSE 100 and S&P BSE SENSEX Next 50. Persistent is also a constituent of the Dow Jones Sustainability World Index. The Company has achieved carbon neutrality, reinforcing its commitment to sustainability and responsible business practices. Persistent has also been named one of America's Greatest Workplaces for Inclusion & Diversity 2025 by Newsweek and Plant A Insights Group. As a participant of the United Nations Global Compact, the Company is committed to aligning strategies and operations with universal principles on human rights, labor, environment and anti-corruption, as well as take actions that advance societal goals. With 468% growth in brand value since 2020, Persistent is the fastest-growing IT services brand in 'Brand Finance India 100' 2025 Report.

USA

Persistent Systems, Inc.
2055 Laurelwood Road
Suite 210
Santa Clara, CA 95054
Tel: +1 (408) 216 7010
Email: info@persistent.com

UK

Persistent Systems UK Limited
3 More London, Riverside
London SE1 2RE

France

Persistent Systems France S.A.S.
18 Rue de Londres, 75009
Paris

India

Persistent Systems Limited
Bhageerath
402 Senapati Bapat Road
Pune, 411016
Tel: +91 (20) 6703 0000



Persistent